

# **LACAZIOSE (*Lacazia loboi*)**

## **DIAGNÓSTICO LABORATORIAL**

**Rossana Sette**  
**NKB – Medicina Diagnóstica – PE**  
[WWW.micologia.com.br](http://WWW.micologia.com.br)

# DIAGNÓSTICO CLÍNICO

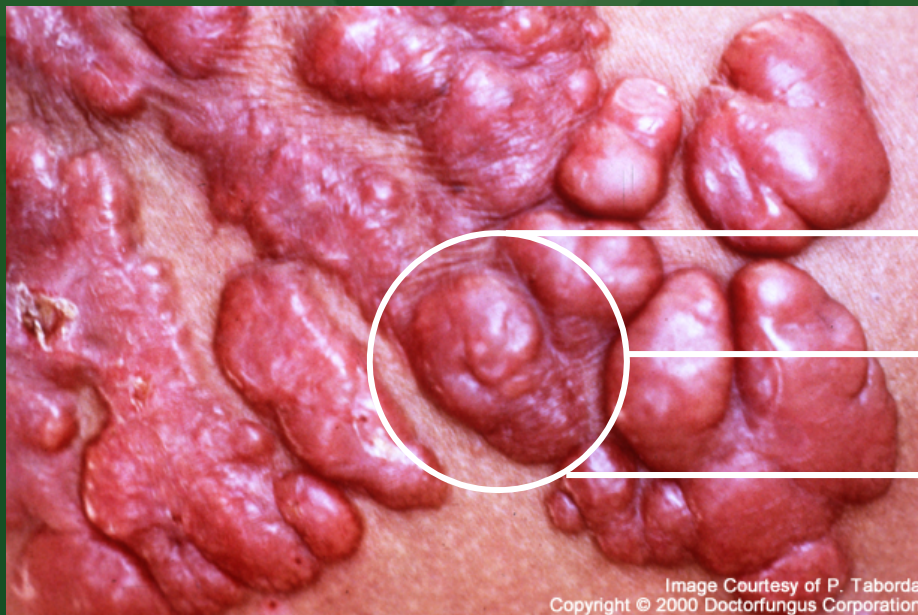
Características clínicas das lesões queloidiformes sugerem o diagnóstico clínico



# DIAGNÓSTICO LABORATORIAL

## EXAME DIRETO A FRESCO HISTOPATOLÓGICO

Amostras clínicas obtidas por:



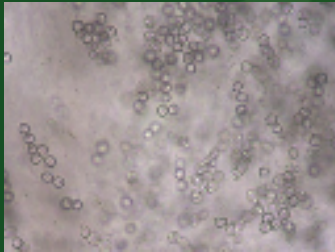
Escarificação - B. Hansen

Biópsia

Extirpação cirúrgica

Image Courtesy of P. Tabora  
Copyright © 2000 Doctorfungus Corporation

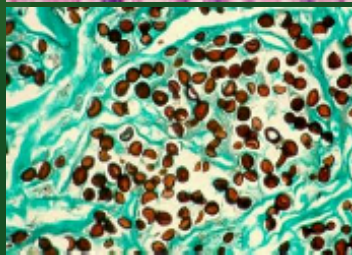
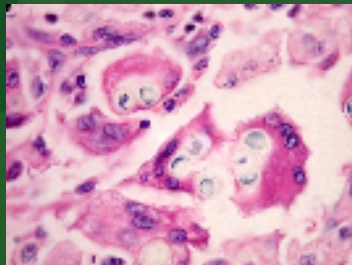
# DIAGNÓSTICO LABORATORIAL



**EXAME DIRETO A FRESCO**  
KOH 20%



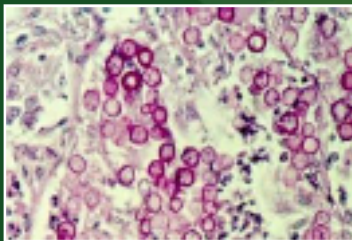
Células globosas, brotantes tamanho uniforme, parede birrefringente, formando cadeias



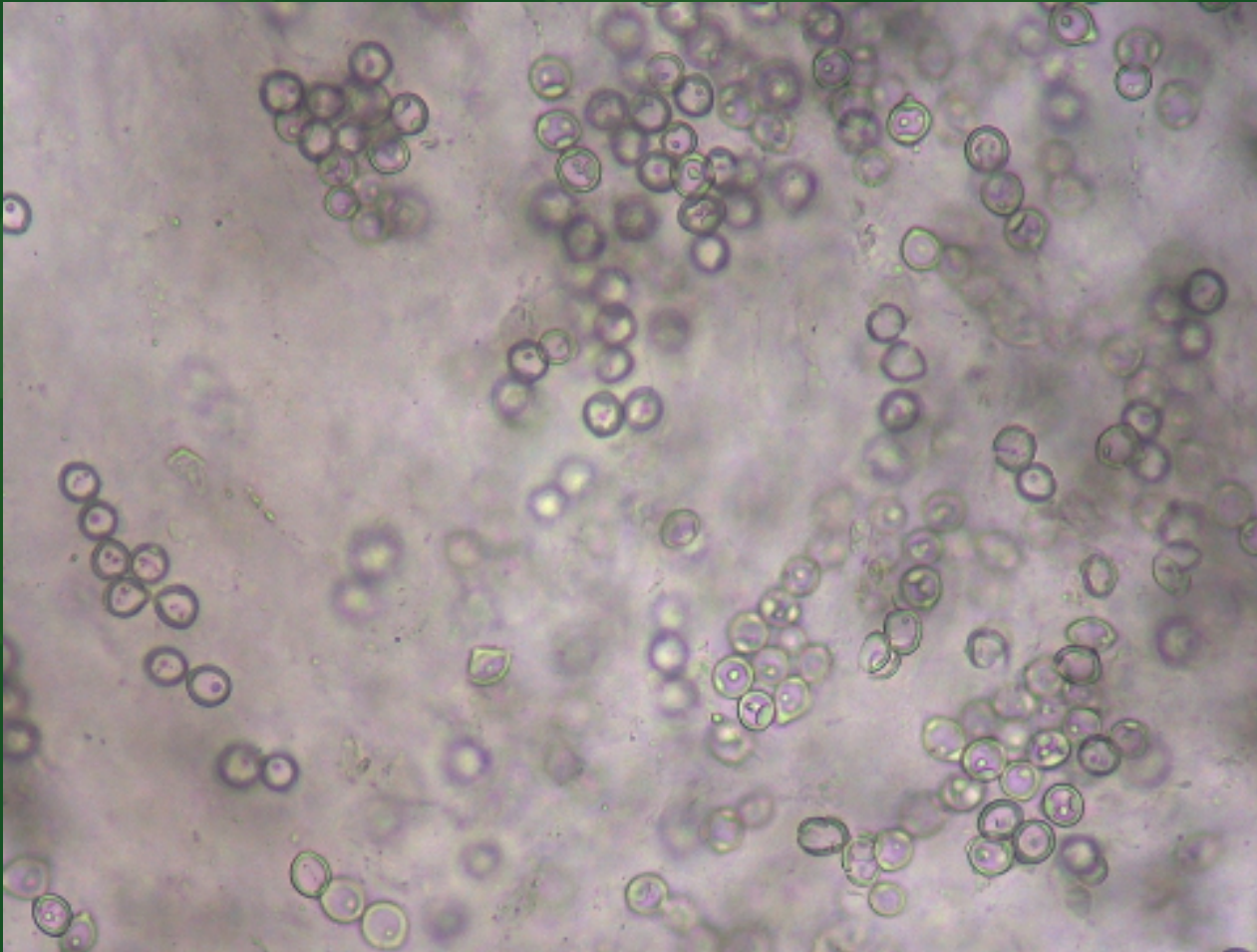
**EXAME HISTOPATOLÓGICO**  
Coloração HE, GMS, PAS



Células arredondadas, parede espessada, isoladas ou catenuladas em brotamento



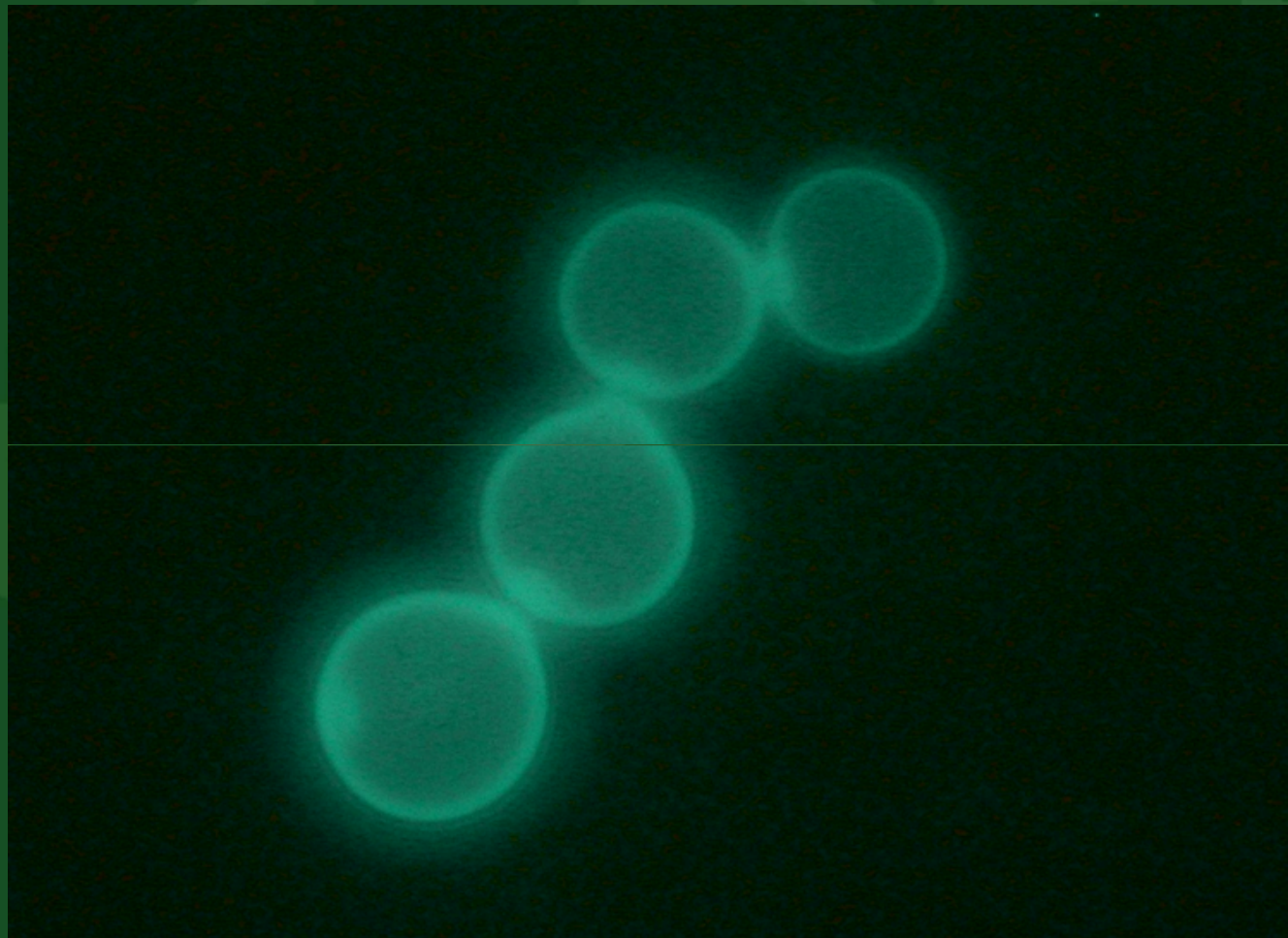
# EXAME MICOLÓGICO DIRETO



Numerosas células fúngicas com paredes birrefringentes (400x)

Foto cedida por Jorge Pereira da Silva - Universidade Federal do Pará - UFPA.

# EXAME MICOLÓGICO DIRETO



KOH - 20% +  
branco de  
calcoflúor 1% - MF

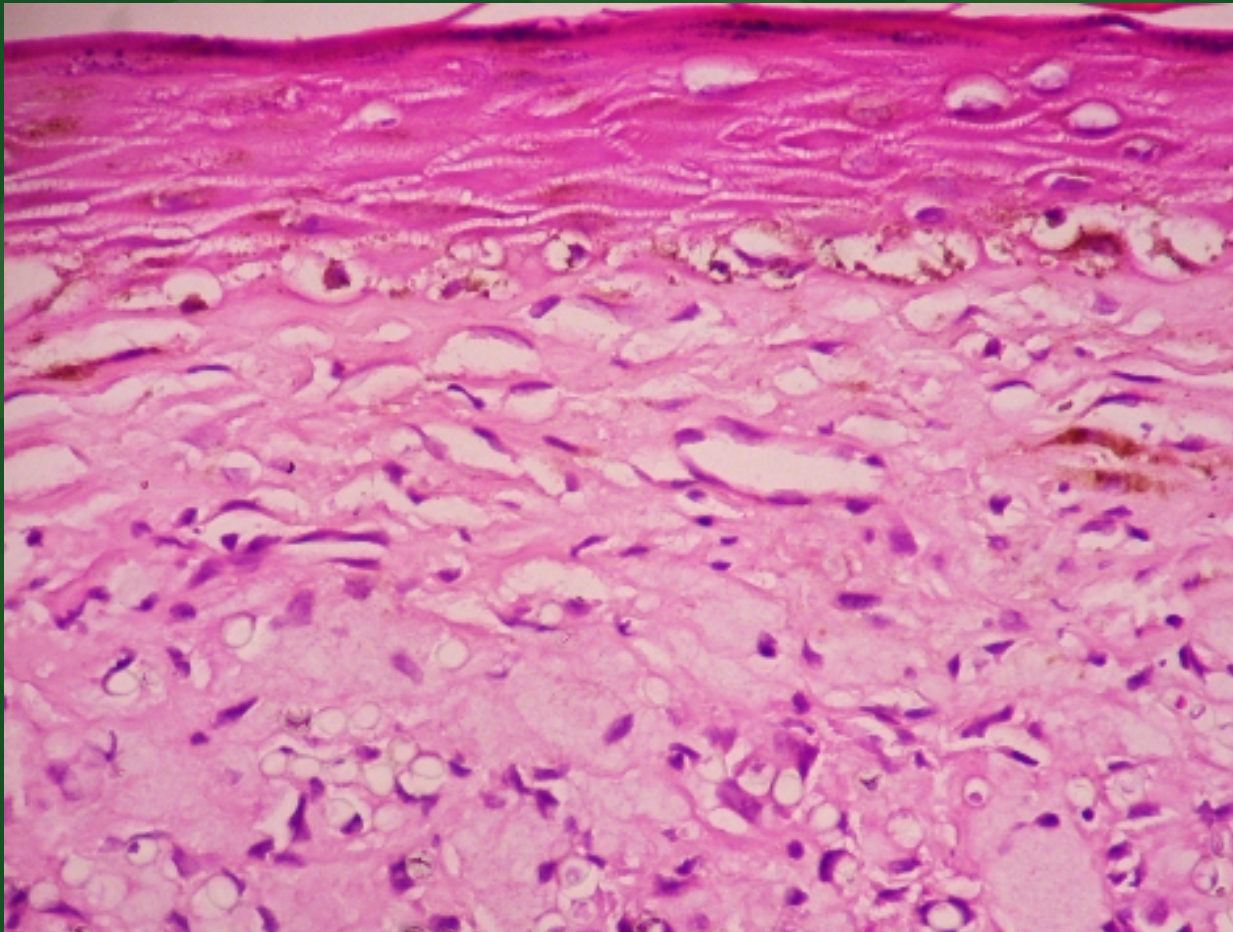
Exame demonstrando estruturas fúngicas catenuladas (1000x)

Foto cedida por Jorge Pereira da Silva - Universidade Federal do Pará - UFPA.



Rossana Sette  
Micologia Médica

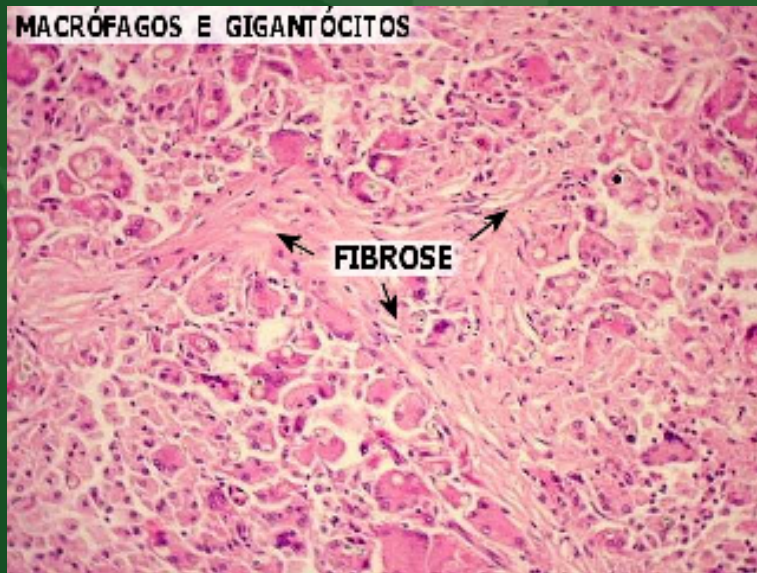
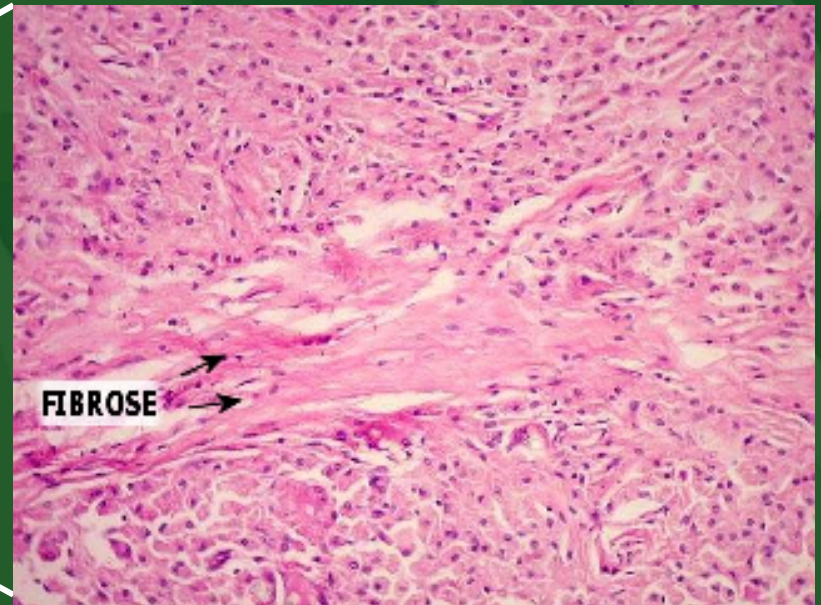
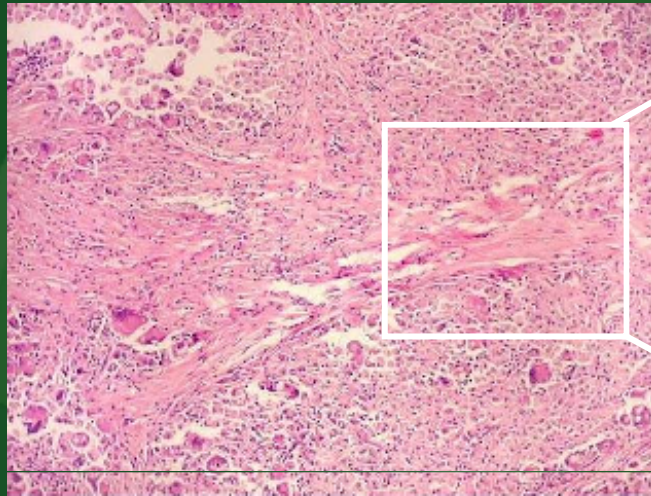
# EXAME HISTOPATOLÓGICO – Hematoxilina-eosina



Epiderme atrófica e retificada, faixa de Unna e grande quantidade de fungos na derme (400x)

Foto cedida por Jorge Pereira da Silva - Universidade Federal do Pará - UFPA.

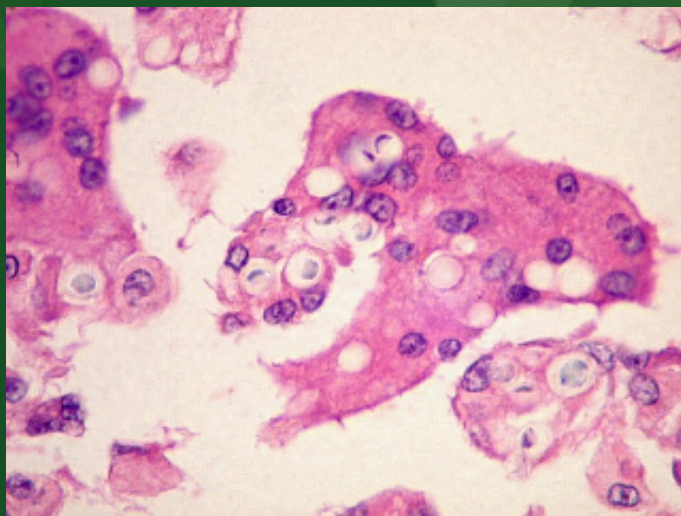
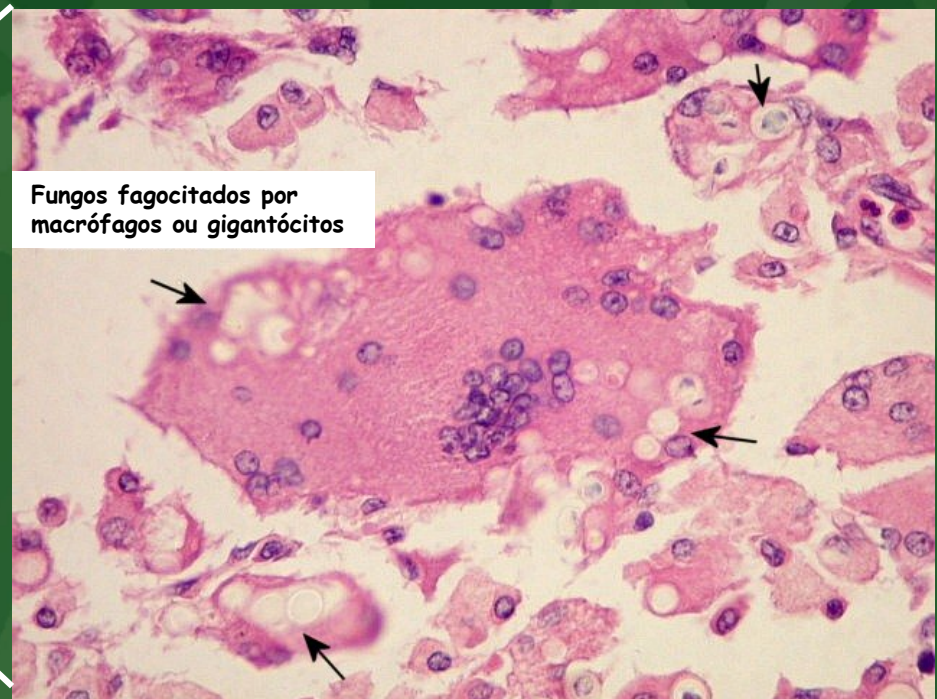
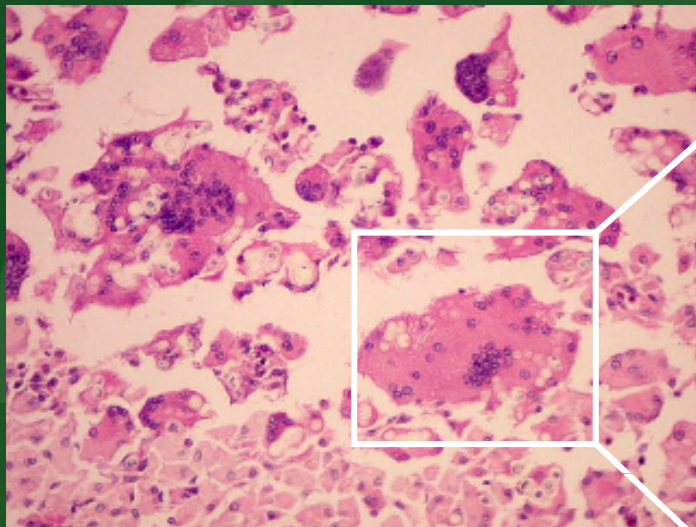
# EXAME HISTOPATOLÓGICO – Hematoxilina-eosina



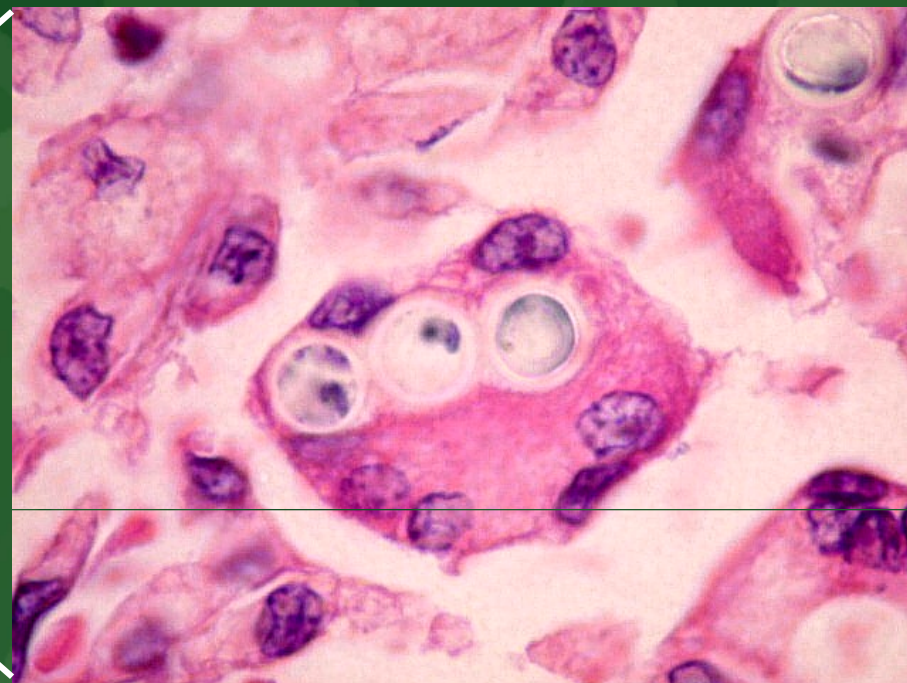
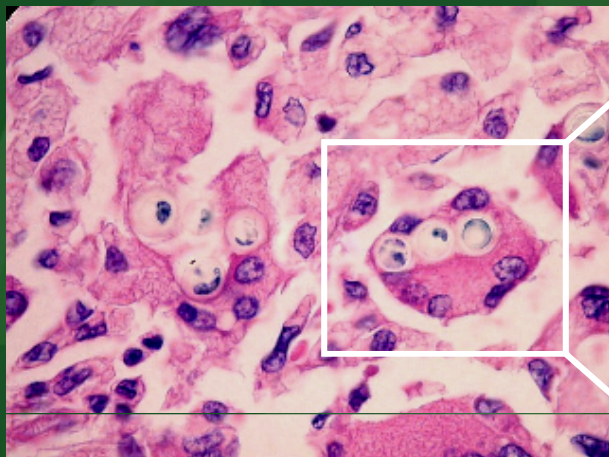
Infiltrado granulomatoso difuso com fibrose na derme



# EXAME HISTOPATOLÓGICO – Hematoxilina-eosina

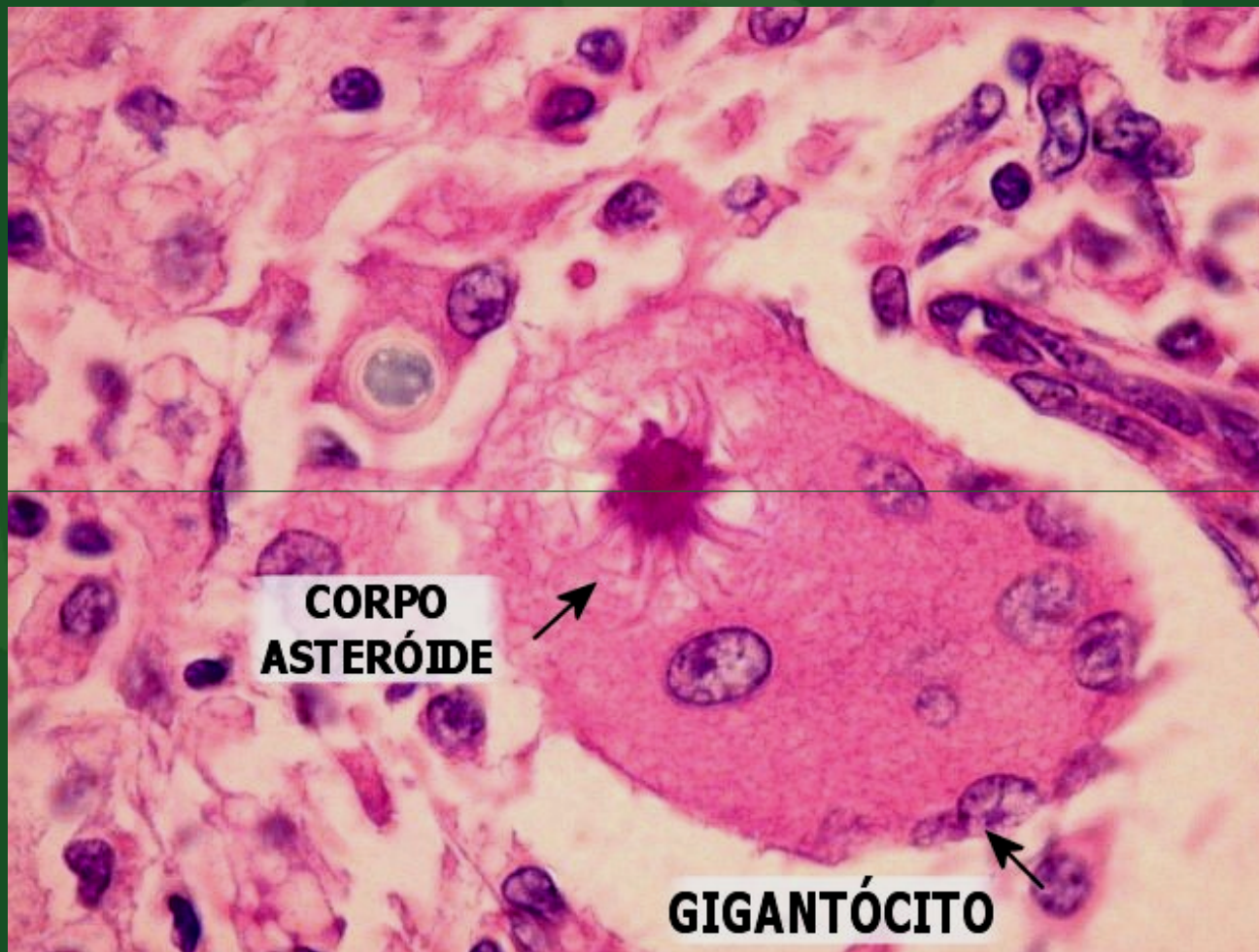


# EXAME HISTOPATOLÓGICO – Hematoxilina-eosina

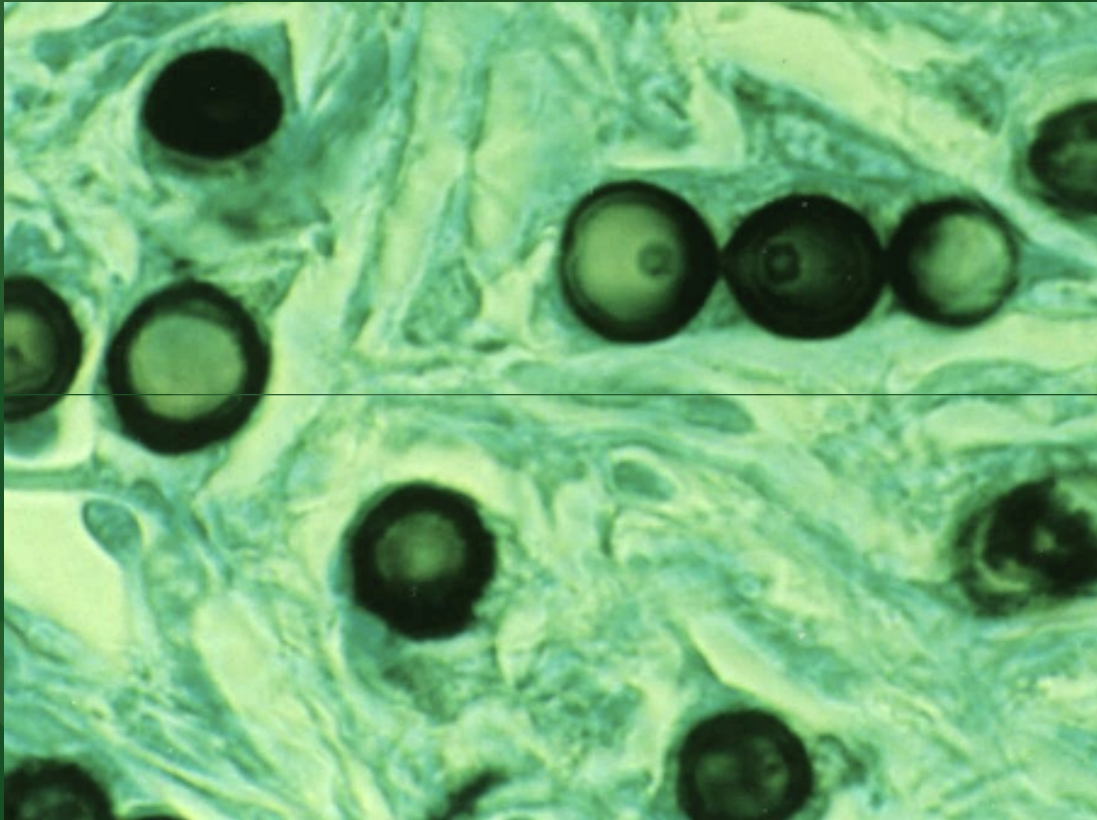


Estruturas fúngicas com  
parede de duplo contorno

# EXAME HISTOPATOLÓGICO – Hematoxilina-eosina



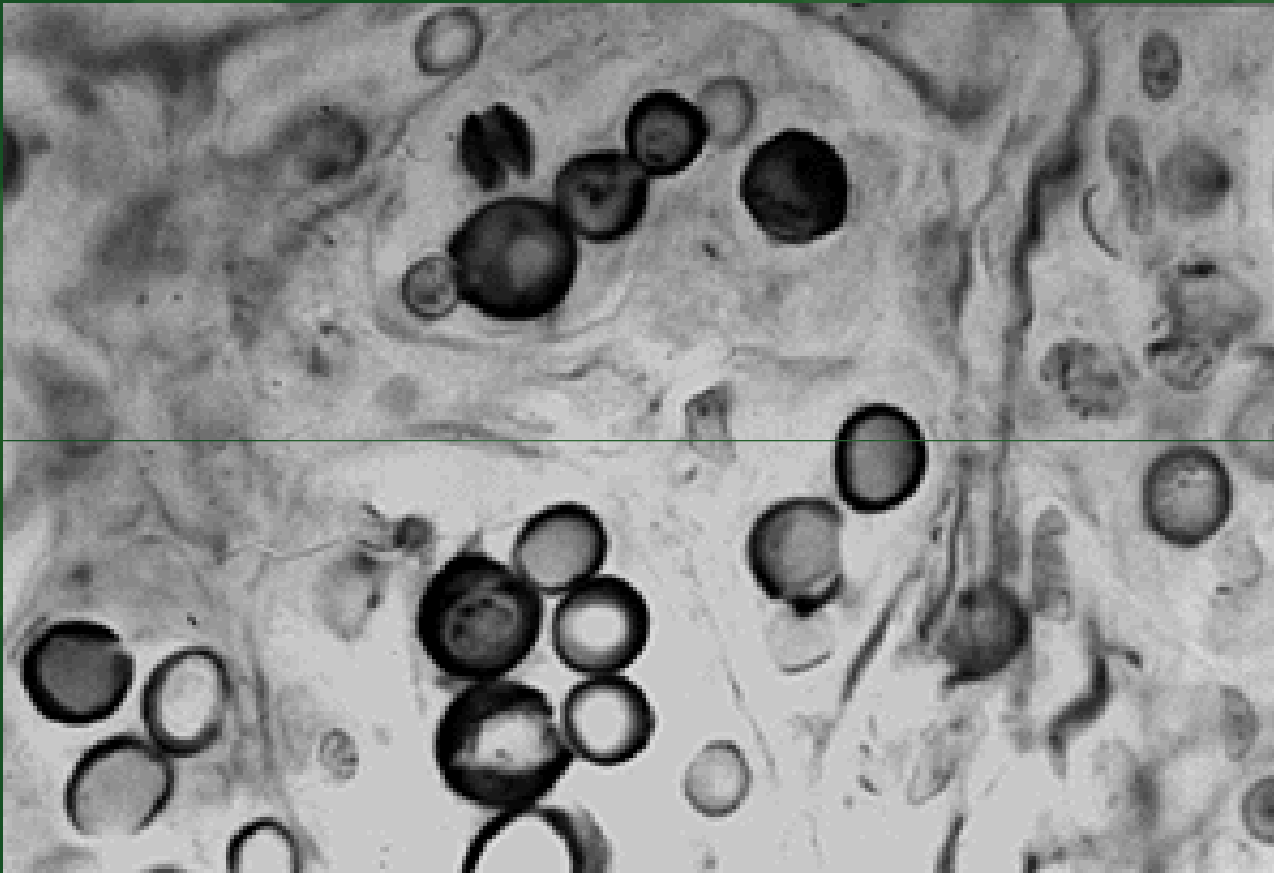
# EXAME HISTOPATOLÓGICO – Prata-metenamina



Células fúngicas isoladas e catenuladas coradas de marrom-enegrecido (1000x).

Essa coloração destaca melhor as pontes intercelulares, gemulações e possibilita uma avaliação do índice de viabilidade do *L. loboi*.

# EXAME HISTOPATOLÓGICO – Fontana-Masson



Melanina - fator de virulência do fungo.

Presença de melanina nas paredes das células fúngicas (1000x)